




*Ideal for Mandaue professionals, first-time homebuyers, and start-up families.*

# *Amada* CONDOMINIUM

 ***Poblacion Bajac, La Almirah  
Crest, Liloan, Cebu***

**TURNED OVER:** **2025**

***OPEN FOR RESERVATION!***



*The Future is Liloan.  
Own a Piece of It.*

# THE LILOAN ADVANTAGE:

## AMADA'S FLOOD-SECURE, READY-TO-OWN LIFESTYLE.

*Why savvy investors choose Amada at La Almirah Crest.*

### CONVENIENCE



- ✓ 5-minute reach to Pier 88 (International Port)
- ✓ 6-minute reach to Liloan Bay Mall
- ✓ 10-minute reach to SM City Consolacion

### LIFESTYLE



- ✓ Full Resort Access (Pool, Clubhouse, Chapel, & Half Basketball Court)
- ✓ Flood-Proven Peace (Zero flooding during Typhoon Tino)
- ✓ Exclusive Sanctuary

### VALUE



- ✓ Immediate ROI (Ready-for-Occupancy units; start earning rental income or move in today)
- ✓ Flexible Rent-to-Own (Get up to a PHP 50,000 discount on TCP with 6 to 12-month stretch terms)
- ✓ City-Style Living (Enjoy an urban condo setup without the dense, overcrowded city noise)

**Top 3 Reasons Clients Choose Amada**



**Prime North Location**



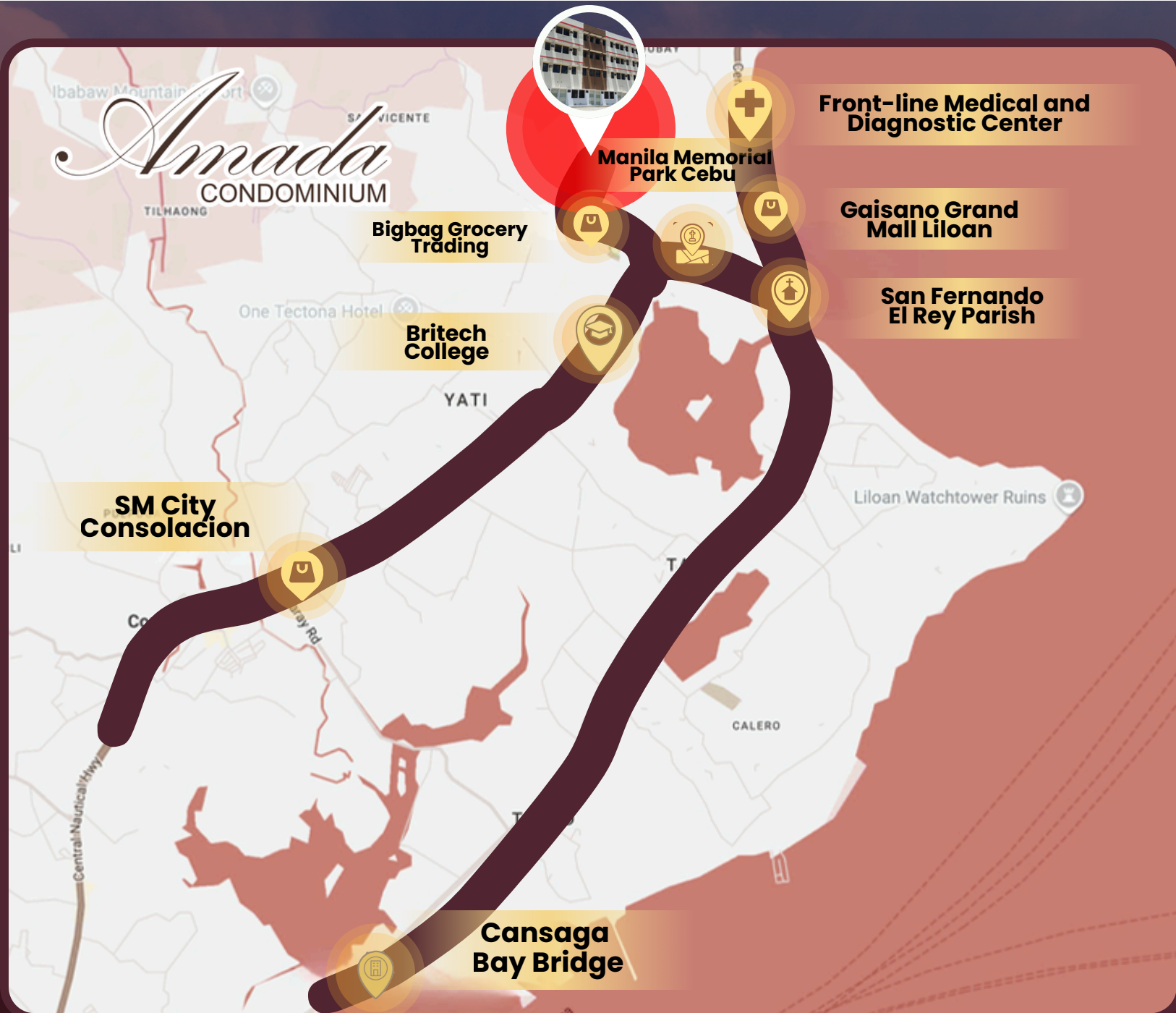
**Zero-Flood Zone**



**Ready to Move In**

# LOCATION MAP

AMADA'S FLOOD-SECURE, READY-TO-OWN LIFESTYLE.



## CLOSEST LANDMARKS

 <b>Bigbag Grocery Trading</b> 950m   2 mins	 <b>Britech College</b> 1.9km   5 mins	 <b>SM City Consolacion</b> 4.8km   12 mins
 <b>Manila Memorial Park Cebu</b> 1.7km   4 mins	 <b>Gaisano Grand Mall Liloan</b> 2.5km   6 mins	
 <b>Front-line Medical and Diagnostic Center</b> 1.7km   4 mins	 <b>San Fernando El Rey Parish</b> 2.7km   7 mins	 <b>Cansaga Bay Bridge</b> 9.3km   20 mins



SCAN TO OPEN  
IN GOOGLE MAPS:



# MID-RISE RESIDENTIAL CONDOMONIUM

FEATURE	PROJECT DETAILS
Developer:	Myvan Properties and Development Inc.
Location:	Poblacion Bajac, La Almirah Crest, Liloan, Cebu
Project Type:	Mid-Rise Residential Condominium (Tower 1)
Status:	Ready for Occupancy (RFO)



## INVENTORY AND TIMELINE

- ⇒ Total Inventory: 92 units (Low-Density & Exclusive)
- ⇒ Unit Mix: Studio units
- ⇒ Turnover Date: 2025
- ⇒ Parking Rules: Parking Slots Available for SALE

# WHAT'S INCLUDED:

*Finishes and Deliverables*

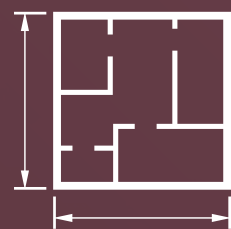
## FINISHES



Fully Finished



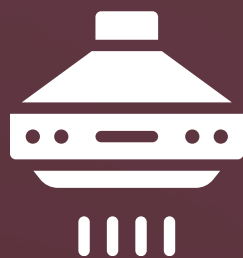
Wall Finished  
(wall acrylic paint)



Tiles Finished  
(ceramic tiles)



Kitchen Cabinet



Kitchen Rangehood



Plumbing Fixtures  
(Shower, Lavatory, Water Closet, Kitchen Sink, and etc.)



With or Without Balcony

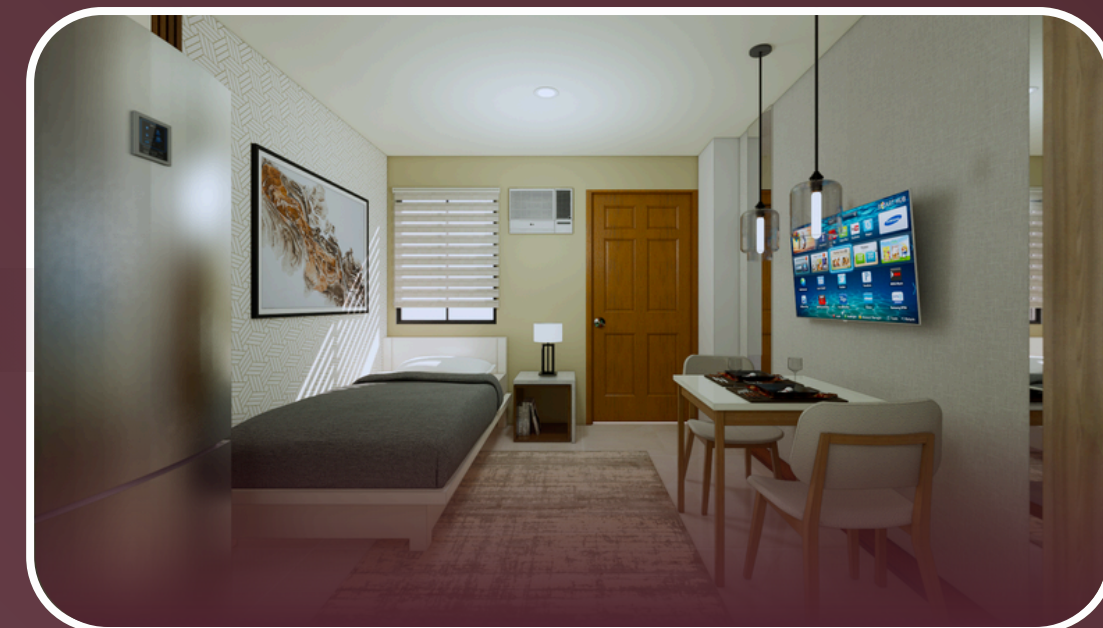


Mahogany Painted Door

## FLOOR AREA



18 | 20 | 21 sqm.



# AMENITIES

*Experience The Best*

**JOGGING  
PATH**



**BASKETBALL  
COURT**



**THE  
CLUBHOUSE**



**SWIMMING  
POOL**



# ***PERSPECTIVES***

*Crafted With Vision*

## **AMADA 4-STOREY BUILDING**



# EXPERIENCE THE AMADA ADVANTAGE:

## FLOOD-PROOF & READY TO OWN

*Your serene sanctuary in booming Liloan, Cebu.*

### CLOSE TO EVERYTHING

*This section shows how easy it is to travel, since you are just minutes away from the new International Port and the big malls in Liloan.*



### SAFE FROM FLOODS

*This part highlights safety by proving the area stays completely dry, even during heavy storms like Typhoon Tino.*



### ZERO WAITING TIME

*This block points out that the building is already finished, so you can move in or find a renter right away without waiting for years.*



### AMADA GROWING VALUE

*This portion explains that buying here is smart because the whole area is booming, meaning your property will be worth much more in the future.*

